

Dear parents and children,

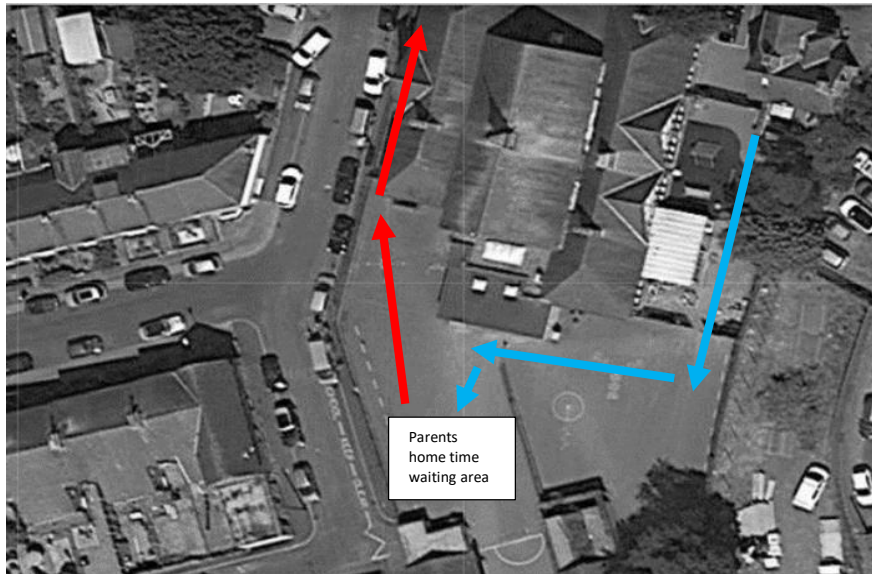
Welcome to your new class in KS1, we are very excited to begin this year together. We will be learning so many new things, as well as growing and maturing socially and academically. We are looking forward to getting to know you and although things may feel a little different at first, we will quickly get into the swing of things. Our priority will be the safety and wellbeing of the children on their return, so good communication with you will be vital to ensure we meet their needs.

Unfortunately, we will not be able to have face-to-face conversations as we would normally. We will be using telephone and email whenever we need to be in touch with each other. When we are in class teaching, we will be unable to respond to emails. If you urgently need to contact the school, please speak to the office. The KS1 email address is: ks1@newparkacademy.co.uk

In Year 1/2 P.E lessons will be on a Wednesday. Children should come to school in their P.E kits as appropriate for the weather. Please wear jogging bottoms, trainers a white t-shirt and plain or school jumper. Remember a waterproof coat as well.

We cannot wait to share some wonderful new books with you and start listening to you read each day. It is so important that this is mirrored at home. We will be sending home two books each week – one at your child's reading level and one with the sounds we will be learning in phonics that week. Please read with your child every day and sign their reading record with any comments you have, whether to celebrate some brilliant reading or a note about a tricky word or sound.

The start of the school day and home time will feel a bit different and we need to be quite strict about how we say hello and goodbye to the children each day. You should follow the one-way system into the playground via the main gate for drop-off and exit the playground through the side gate on Skipton Road. At the end of the day, we kindly ask that you wait for your child on the playground slope (see diagram) beneath the one-way exit, so that we can look down to see you before releasing your child. Please keep your distance from the doors so that we can safely enter and exit the building.



It will be so lovely to see all your faces and start getting to know you over the next few weeks. We look forward to seeing you all again.

Mrs Umpleby and Miss Cornelius